



# **Jupiter Alternative Energy Solutions**

**The Boon of Technical**

**Solution Provider for Your  
Domestic & Industrial  
Daily Power Needs**



Copyright © All rights reserved 2012.

Mob: 00973 39236574 E-mail: [jap@jems4u.com](mailto:jap@jems4u.com) Web: [www.jupiteralternativepower.com](http://www.jupiteralternativepower.com)

## Jupiter in Alternative Power Industry Equipment Manufacturing



Founder & CEO : Abivi. R. Jehan

Jupiter is the pioneer in domestic and Industrial alternative electrical power production equipments manufacturing industry since 1988,

And we would like to introduce proudly with challenge in custom design, manufacture & parts supply with after sales Professional technical service support provides in and around Asia.



### Our Mission

Our mission is to empower the domestic power needs with alternative power generation by various concepts and creative, renewable energy conservation solutions.

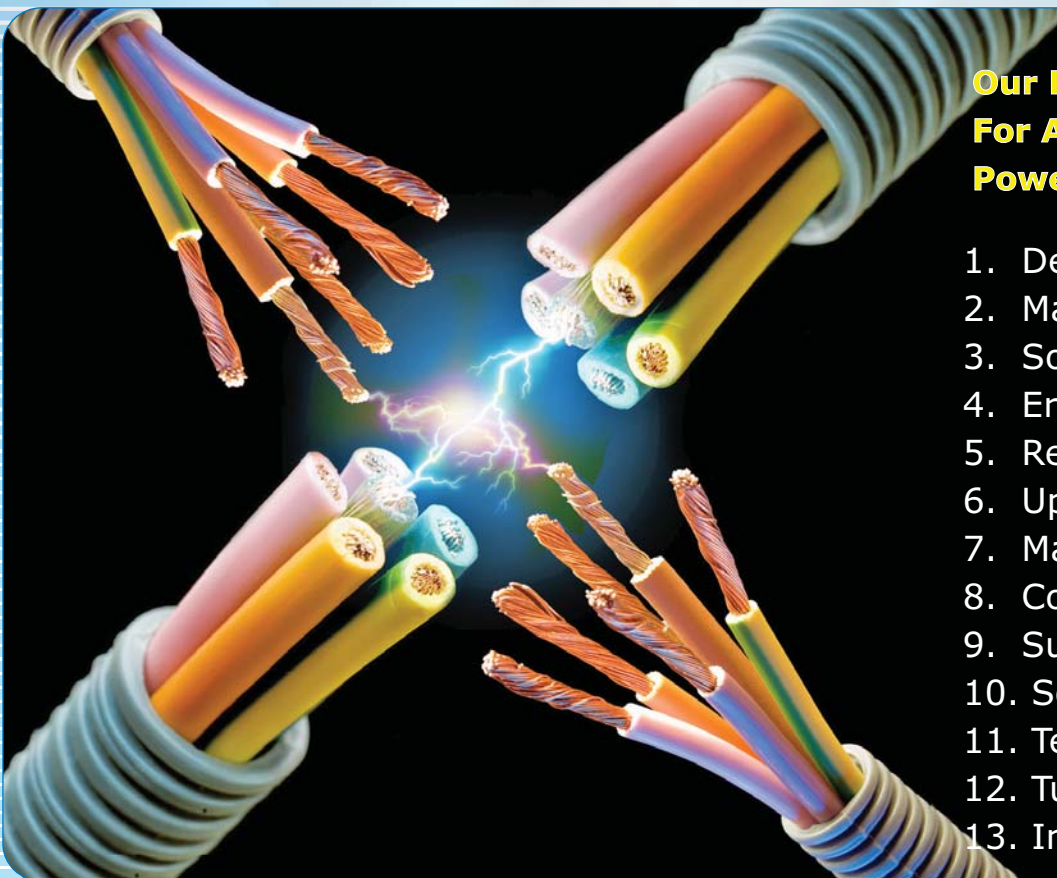
### Our Vision

To contribute to a future where more energy is produced from renewable sources, and commercial success takes account of ethical and environmental standards.



### Our Prime Services For Alternative Power Industry

1. Design
2. Manufacture
3. Source
4. Erection
5. Repairs
6. Upgrades
7. Maintenance
8. Consultancy
9. Survey
10. Solutions
11. Technology
12. Turnkey
13. Investor





## Alternative Energy Consultancy Services

We Undertake Alternative Energy Feasibility Studies :

- Project Funding Availability (Grants & Loans)
- Solar & Wind System Technologies Evaluation
- Assessment of Annual Energy Production Potential and Associated Energy & Cost Savings
- Environmental Equivalency Benefits

## Economic and Financial Analysis

Jupiter is able to prepare a preliminary financial analysis to assess the potential viability of a proposed solar/wind energy project based on a variety of potential project development scenarios. For net metered projects, ARM will examine the economic viability of a solar/wind system sized to offset the site's electrical loads. Jupiter will then develop a unique cash flow model for a variety of financial scenarios for the site that will be used to compute NPV, IRR, return-on-equity and payback period.

## Site Selection and Optimization

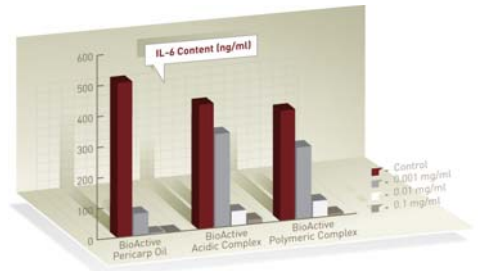
- Grid Connection Issues Interconnection Assessment
- Structural Integrity of Mounting Surfaces
- Ground Mounting Design Engineering
- Quantitative Shading Analysis
- Erosion and Sedimentation Control Considerations

## Land Development Planning & Permitting

Jupiter will evaluate local zoning ordinances, building codes, and other regulatory permitting requirements and complete the steps necessary to successfully permit the project.

## Contracts and Power Purchase Agreements

On behalf of the client, Jupiter can assist in establishing an equitable renewable energy credit (REC) contract to ensure that the project developer is maximizing the potential return on investment. Jupiter can also assist in establishing power purchase agreements with utilities or nearby large energy consumers to ensure the financial viability of their solar & wind energy project.





## Solar Energy Services

Assessing the available energy resource based on facility orientation, layout, locale, shading, and historical weather patterns is an integral first step in any Solar Feasibility Study.

## Infrastructure Design and Engineering

Jupiter and its strategic partner have the combined resources to design all of the electrical features of a solar & wind energy project, including transformer design, switchgear design substation design and load sharing design for larger systems interconnecting to the grid.

## Visual Simulations

Jupiter prepares Auto CAD drawings of sufficient detail to construct the project. Jupiter is also able to prepare photo-simulations and visual renderings of the project to assist in the promotion or permitting of the project.

## Project Management & Quality Assurance

Once the project moves into the design and construction phases, Jupiter has the resources and expertise to complete and manage the project construction using qualified contractors; guaranteeing quality assurance of all completed work.



## Thermal Energy & Permanent Light Energy Project in "Mega Watts"





## Wind Engineering & Consulting Services

### Tower Erection & Wind Speed Data Collection

The estimated long-term average wind speeds of the site will be determined from meteorological tower data. The information gathered is used to understand the wind regime and characteristics at the site, determine the potential project size, number of wind turbines and estimated annual energy production potential.

### Civil Infrastructure Engineering

Jupiter's engineers will examine the feasibility of constructing a large-scale wind energy installation at the prospective site. ARM will evaluate the site's suitability to accommodate wind turbine foundations, access roads, crane paths, crane pads, and electrical infrastructure. Jupiter will prepare the detailed civil, mechanical and electrical design drawings and contract documents for construction.

### GIS Mapping & Visual Impact Studies

Jupiter's in-house GIS capabilities allow it to quickly evaluate the potential view shed of the project. Jupiter also has the ability to prepare photo-simulations of the project and assess those areas that could be affected by shadow flicker.

### Environmental Impact Assessments including:

Independent experts have studied aspects such as landscape and visual impact, cultural heritage and archaeology, ecology, noise and transport issues as part of the Environmental Impact Assessment, a statutory requirement for a project of this scale.

- Environmental Control Planning & Permits
- Ecological Impact Studies
- Avian Impact Studies & Noise Assessments

### Wind Turbine Selection & Micro-Siting Analysis

Based on the wind characteristics and the site terrain, Jupiter has the ability to select the wind turbines best suited for a given site.

Jupiter's micro-siting analysis helps to optimize the siting of the wind turbines to ensure that maximum energy production is achieved.





## Alternative Energy For Domestic & Commercial

### Wind Energy Power

We design, manufacture and supply different types of wind power production systems and our wind power concept is one of the abundant, clean, inexpensive, renewable and easy to use resource. And specially our AC/DC wind mills produce power range from 300W to 300KW



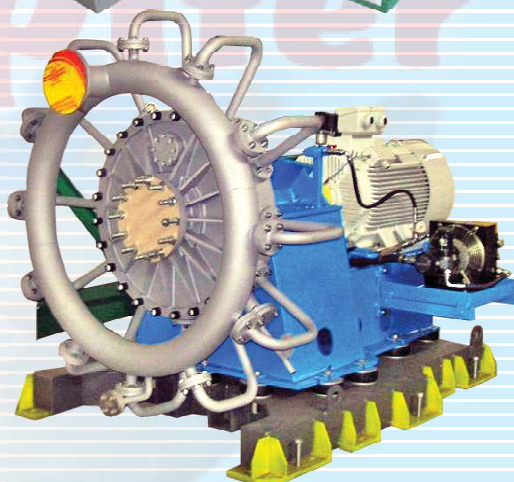
### Solar Energy Power

We manufacture & supply custom made, stable mobile and intelligent solar tracking hybrid power production systems and solar power kits. Which are packaged complete with various solar panels. Jupiter offers the largest selection of high-quality solar products & components available as well as pre - engineered, packaged residential & commercial solar systems.



### Steam Energy Power

We survey, design, manufacture, supply and erection different types and capacity of steam power generator by waste flames and waste heats convert to steam energy. Such as from bricks burning chamber, textile industry water boilers, steel metal melting furnaces. The range of power from 5kW to 500KW with the stability and flexibility to address the specific requirements of your particular application.



### Microhydro system

We design, manufacture, supply and erection water flow and force domestic & commercial generator. Such as falls, river, canal, borewell & deep water recirculation.

The water passes through the turbine runner which converts the energy in the water into shaft power and spins the generator stator and available power capacity from 1KW to 100KW.

Microhydro systems are very flexible and can be deployed in a number of different environments. They are dependent on how much water flow the source (creek, river, stream) has and the velocity of the flow of water.





## Power Plant Operational Models

### **BOT Build Operate Transfer**

Jupiter offers (B O T) Build Operate Transfer services. We build your power production business team at our premises, take care of its administration and management, provide resources and facilities and after the set period of time, the control transfer to you.



### **BOOT Build Own Operate Transfer**

A BOOT structure differs from BOT in that the private entity owns the works. During the concession period the private company owns and operates the facility with the prime goal to recover the costs of investment and maintenance while trying to achieve higher margin on project.

### **BOO Build Own Operate**

Under B L T a private entity builds a complete project and leases it to the government. On this way the control over the project is transferred from the project owner to a lessee. In other words the ownership remains by the shareholders but operation purposes are leased. After the expiry of the leasing the ownership of the asset and the operational responsibility are transferred to the government at a previously agreed price.

### **DBFO Design Build Finance Operate**

Design- Build- Finance- Operate is a project delivery method very similar to BOOT except that there is no actual ownership transfer. Moreover, the contractor assumes the risk of financing till the end of the contract period. The owner then assumes the responsibility for maintenance and operation.

### **DCMF Design Construct Manage Finance**

A private entity is built to design, construct, manage and finance a facility, based on the specifications of the government. Project cash flows result from the government's payment for the rent of the facility. Power plant for tomorrow and beyond.



**Intelligent Sun Tracking Solar Power Project "Maga Watts"**



## Jupiter's Solar Cooker

The India's first and best cost effective solar cooker designed & manufactured by "Jupiter Pvt Ltd". And we design and supply according to client requirements such as hotels, restaurant hospitals and homes etc... Cook food without electricity, gas, wood fire... Some major advantages and benefits of solar cooking.

First of all you may have realized that the energy from the sun is free. Second it uses none of our limited natural resources that are currently being used for other alternative energy applications in our modern world.

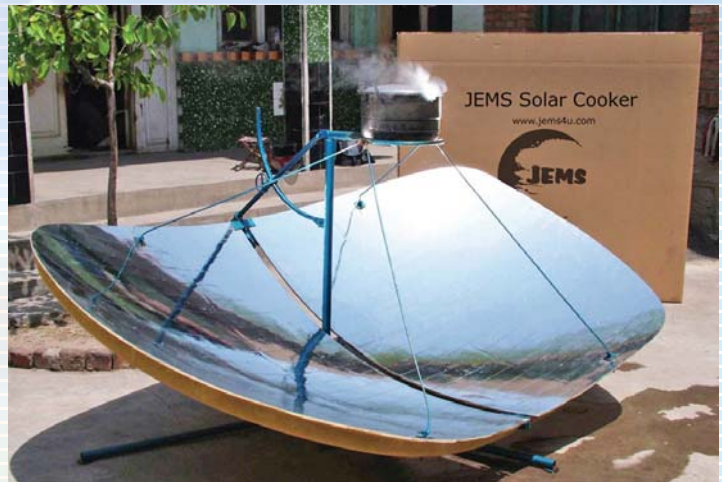
Third it can be a more healthy way of preparing our foods for consumption as opposed to gas, wood, smoky open fire, microwave etc... Because it uses the natural power of the sun's heat energy.

And best of all, it preserves more of the natural nutrients of foods by cooking at slower and lower temperatures. Since solar ovens are used outdoors, and unwanted heats will not cause temperature rises indoors as with conventional stoves, saving even more energy.

Being able to solar heat energy cook is a great advantage in times of trouble, disaster, war and power outages etc of course, solar cooking is just one choice in a multi-faceted field of alternatives and options that comprise the solar energy domain.

### Benefits to:

- Households
- Health Professionals
- Businesses
- Governments
- Environmental programs





## Jupiter Solar Emergency Light

Jupiter is specialized in manufacturing solar emergency lights over six years. This type of solar powered lantern is suitable for the rural households with the lower income cannot afford to rent our Solar Home Systems in India and Asian countries.

Whether you live in part of the world, where you have no access to electricity or at least reliable constant source of electricity or whether you need to light up an area that is remote and electricity is not readily available.

The Jupiter might provide the answer you have been waiting for. In these situations, most people are forced to rely on candles or Kerosene lamps to provide basic lighting in their homes. Battery operated lights are generally not efficient and do not last much. Energy from the Sun is available for free and many parts of the world countries have it in plentiful supply.

As a result there has been a growing interest in Photo-Voltaics (the devices used to convert the Sun's energy into electricity) and Solar Home Systems. Unfortunately the cost of installing even a moderate Solar Home System puts it out of the reach of most families.

The Jupiter Lantern has been designed as a low-cost alternative to a Solar Home System, or emergency light or just a convenient way to provide a constant source of light without any cost and can be charged wherever you are in the world.

### Features:-

- 8 Hours working time from full charge
- Fast charge - full charge in 2-3 hrs
- Versatile - charge from indoor & Outdoor sunlight and other lights
- Automatic emergency function
- Superior quality main & standby battery
- Long lasting battery



Indoor Solar Emergency Light



Outdoor Solar Light



Solar Emergency Light



### 3-in-1 Fuel Free Scooter

Jupiter is specialized in manufacturer of battery scooter Our intelligent simple automation system playing the biggest role in the name of DC HORSE. And the two-in-one motor is integrated directly into the rear wheel and thus brings it's entire power straight to the street. The result is a very strong drive away torque and climbing ability. We design, manufacture & supply up to 30HP/300CC

#### Features

- Need no gear, No engine oil  
No chain, No belt
- It is working as DC Generator, Inverter and Scooter.
- The top speed is 65 km/



Solar & Wind Power Electric Scooter

### Intelligent Solar Insect Killer

We manufacture & supply Solar Insect Killer. It is a Intelligent solar powered insect killer. With the application of weak-light solar panel, maintenance-free lead acid, Ni-MH battery, this insect killer can transfer sunlight into electricity and storage it.

It overcomes the disadvantages of traditional method of killing insects with black lights, and takes advantage of best wavelength and light resonance principle to kill pests in the light of phototoxic and nocturnal habits of them. This machine is named Insects Night Club, Insects Killing Weapon Without Using Chemicals.

The light attracts insects by positive phototaxis, the insects are effected by the special light tested frequency they get dizzy and end up in the water and drown. The Intelligent Solar Sparkling Insect Killer unit electrocutes the insects.

#### Advantages

- Chemical free Organic farming.
- Effective insect killing rates of upto 85%
- Solar powered.
- Bee and natural enemy friendly



Solar Insect Killer



## Jupiter's Steam Powered Generator

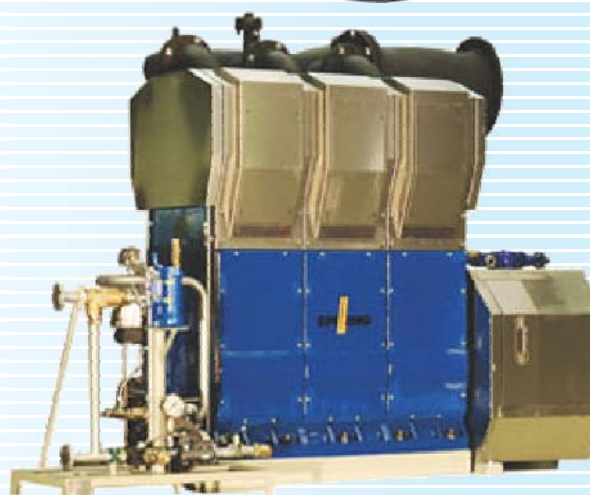
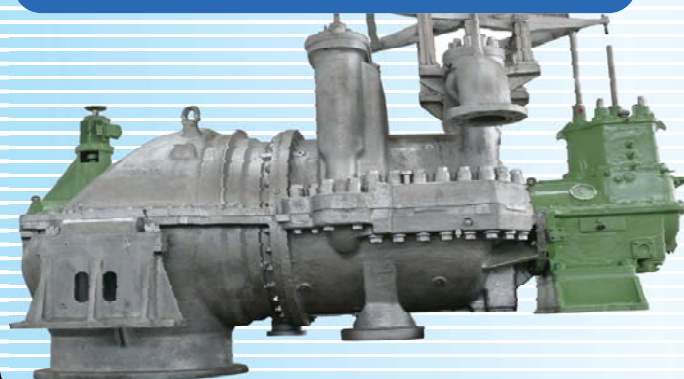
The Jupiter line of single stage steam power has continually evolved from the first delaval based design and incorporates the innovations and refinements of industry leaders Dean Hill, Wing, Manubbat, Hayward and Tyler. We offer designs of proven performance, durability, reliability, flexibility and economy.

Jupiter has factory trained representatives to answer all your steam turbine power needs, whether it is for replacement parts, factory rebuilds, or field service. We can do a full rebuild, partial rebuild, or re-rate of your existing turbine at a fraction of the cost of a new one. We also have a complete wheel assembly shop. We can repair and balance your existing rotating elements.

We provides replacement parts, re-rating of turbines, Re-manufacture of old turbines, Major overhaul of damaged turbines, Field supervision of work on-site, Turnkey installation, and Maintenance contracts for turbines by all manufactures for as long as the equipment remains in service.

### Features

- Steam engines can run 24 hours a day
- There are no construction costs.
- There is no noise or Environmental impact
- Steam Engine may be powered by The widest range of alternative Fuels, including solar and geothermal.
- No back-up power required.





## Spare Parts & Accessories

OEM & Equivalent replacement Parts for all makes & all models of solar & wind power equipment that are no longer manufactured

We are also able to offer a backup unit from Rental fleet in instances where the customer's equipment is removed for repairs & maintenance

- 🔧 Branded & Non Branded Spare Parts
- 🔧 Battery Charge Regulator
- 🔧 Inverters, Deep Cycle Batteries
- 🔧 Power Boosters
- 🔧 Synchronizer, Heads
- 🔧 Panels, Blocks, Control Panel

## Erection & Commission

Our experience ensures we will design the right solution for your business needs. Having installed the largest commercial PV and solar thermal systems in Illinois, we have an excellent reputation with customers,builders,architects,municipalities and industry experts.

Erection commissioning requires experience to prevent potentially dangerous issues. So JEMS offers experience expertise for following tasks.

- Electrification, Upgradation
- Modernization & Dismantles, Relocations

Solar panels should always be installed, serviced and repaired by the experienced, certified professional technicians who have a thorough knowledge and they should always comply with standard operating procedures while doing so.

An aggressive marketing program helps to educate the public and link property owners with installation partners.

 Jupiter Alt Energy Products	
	
  ASTROenergy	
 UNI-SOLAR <small>United Solar Systems Corp.</small>	
	
	
 <i>Don't leave the planet to the stupid</i>	
	 MITSUBISHI ELECTRIC <small>SOLAR ELECTRIC INNOVATIONS</small>
	 kaneka <small>KANEKA CORPORATION</small>
 HYUNDAI <small>HEAVY INDUSTRIES CO.,LTD.</small>	
 ecoSolargy inc.	 SHARP <small>SIMPLY THE BEST Solar</small>
 CONERGY	 bp solar
	
 EVERGREEN SOLAR	



## Inspections

Our independent pre-inspections provide peace of mind and ensure that your project proceeds smoothly and quickly. For commercial or residential installations, an Inspection by Jupiter Energy professionals can enhance system performance and result in substantial cost savings and increased inspection pass rates while providing local jurisdictions with the assurance that all code, zoning and construction requirements have been interpreted correctly and adhered to in design and execution.

### With Scheduled Maintenance We Reduce Your Downtime for Maximum Efficiency and Profit

Reacting to a failure or repair is more costly than pro-active scheduled maintenance through preventive actions. Preventative inspections are a Best Practice for wind farm operations. Ask about our flexible cost control programs that keep your turbines working year in and year out.

### End of Warranty Inspections Protect Your Investment

Take advantage of the warranty offered and make sure the blades are not failing due to manufacturing defects before expiration of coverage. During these inspections lightning damage or other non-warranty problems may also be found and repaired before a serious problem follows.

### Time of Delivery or Installation Inspections

Whether at the port, storage yard or on site, blades should be inspected before installation.

### Inspection Services

- ➔ Photography with high power DG lens
- ➔ Closeup inspections by platform/ crane
- ➔ Lightning system continuity check
- ➔ Comprehensive report / database
- ➔ Determination of warranty/non warran
- ➔ Repair plan with estimate provided
- ➔ Impartial 3rd party inspection reports
- ➔ PV Panels Solar Rays Conductivity
- ➔ Panel Current Conductivity Ratio





## Repairs & Maintenance

Jupiter provides maintenance contracts with every solar system which we sell. Ongoing maintenance is the key to the success of any asset. We insure that your system is well maintained and running at optimal levels.

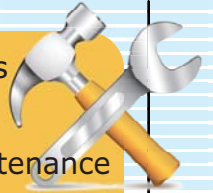
Invariably, our competitors have not provided a system of support to their clients allowing, broken panel, bad inverters, bad wiring and ultimately inefficient systems costing hundreds of dollars in electricity bills.

Our common electric repair services include  
But not limited to:

- Security and safety systems
- Data & communication installation & repairs
- Switchboard upgrades
- Surge protection
- Fault finding and repairs
- Energy audits
- Inspection and testing services

### We are doing

- Breakdowns Emergency Repairs
- Planned Repairs & Maintenance
- Periodical Preventive AMC Maintenance
- Wireless Monitoring & Automation
- Erection, Commissioning & Upgrades





## Power Never Fail Network

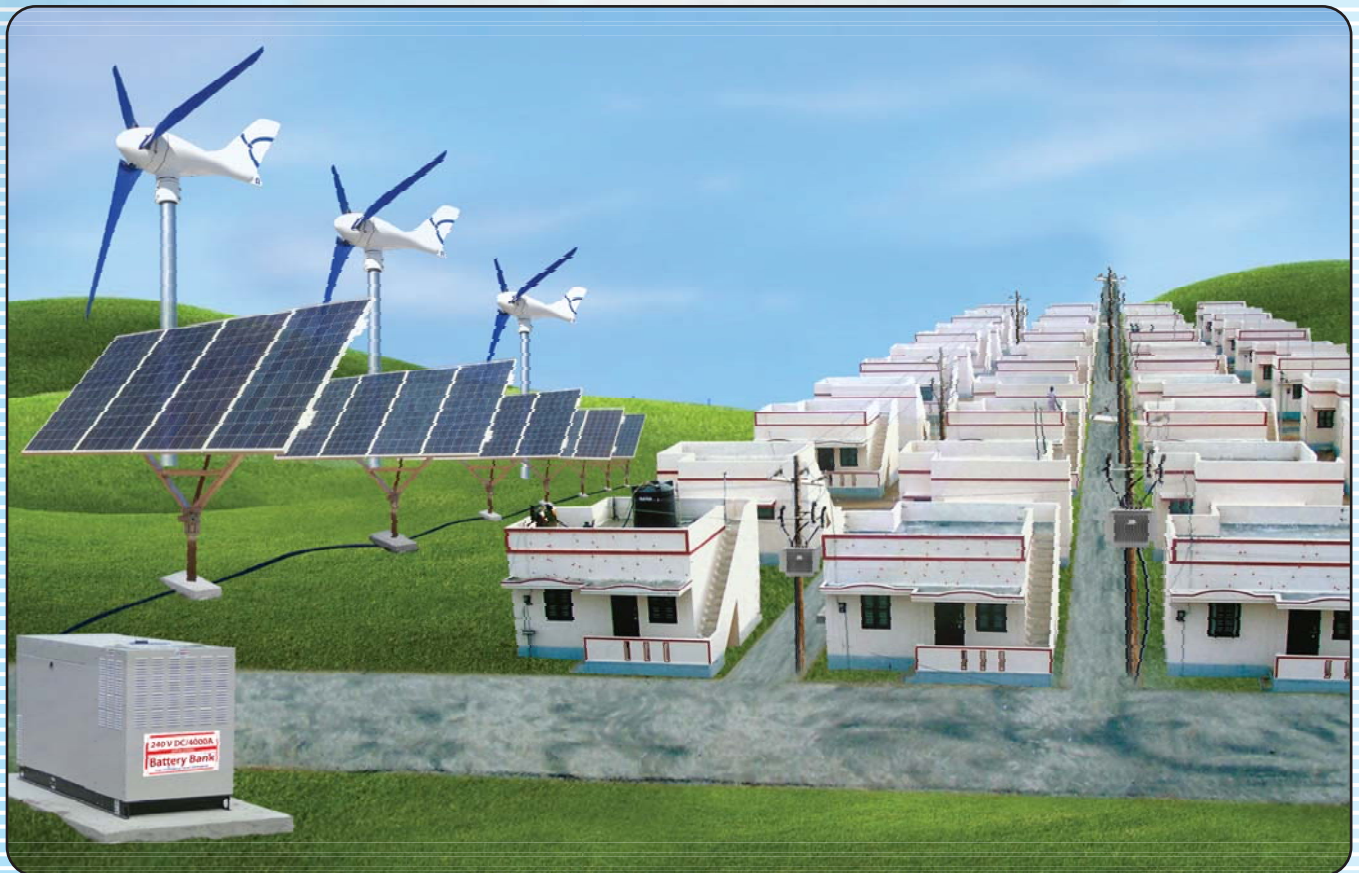
Clean, safe, and reliable, solar & wind technology is an ideal solution to power India's remote villages. Solar microgrids can be set up nearly anywhere, using a distributed generation model that is well suited for isolated sites. New advances in technology have made solar technology more economically viable and sustainable than ever before.

Many remote communities have no power supply and there is little prospect that the utility grid will be supplied to the village for many years. The Jupiter hybrid system combines solar, wind, mini hydro and other sources to provide an effective source of electricity.

### JPNF Meets

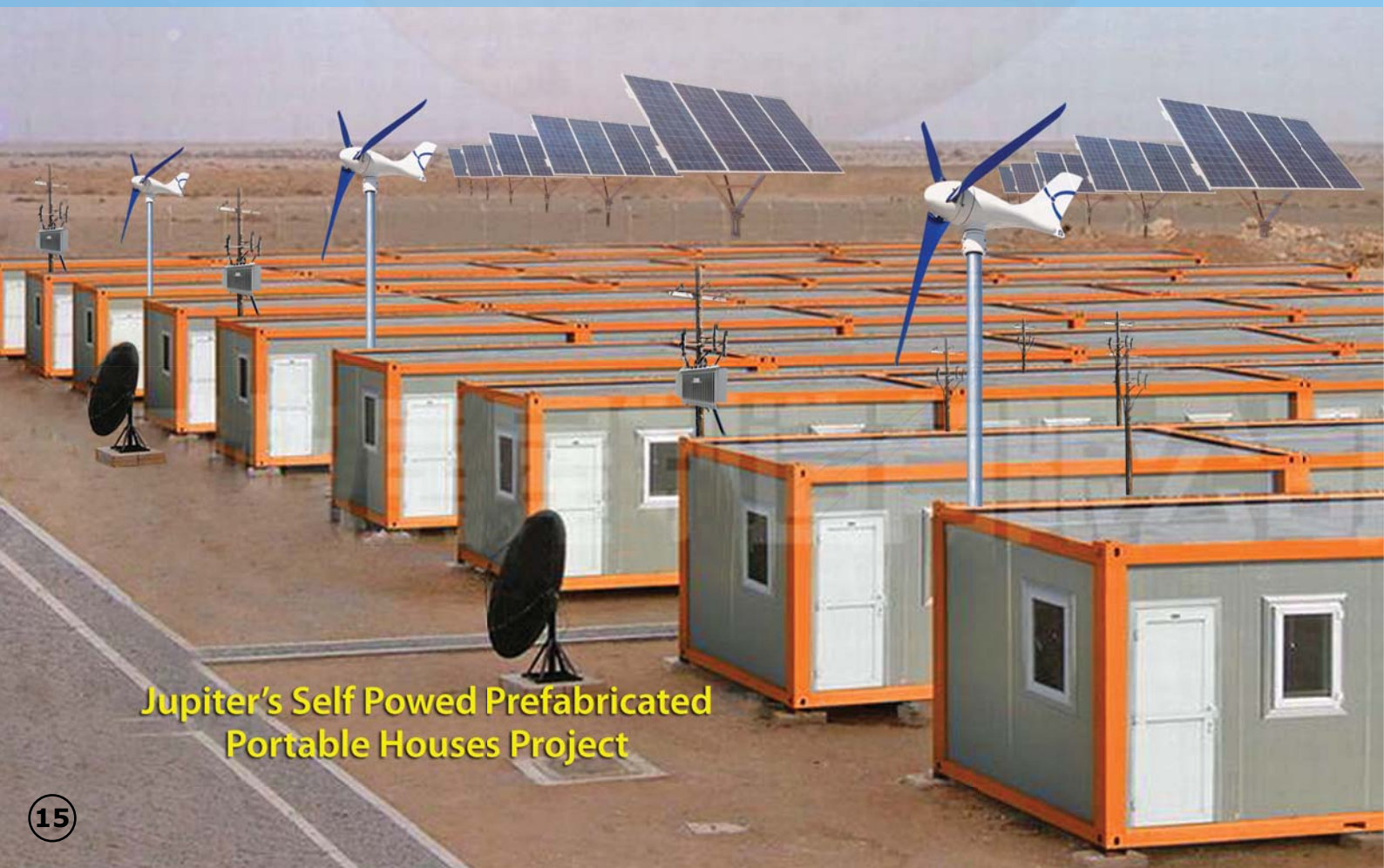
- Emergency alternative power source needs at village & townships. Whenever Ministry power fails we will connect automatically through existing ministry line.
- Seamless power villagisation
- evening lighting needs;
- Support rural clinics for vaccines;
- Ensure domestic supply for basic home needs & health industry needs;
- Deliver economic outcomes for small industry.

Jupiter has many small hybrid systems installed and with an appropriate M&O program can work reliably for many years. Jupiter alternative plans and builds off-grid solar power systems throughout the world. With our advanced sizing software and our experience we are able to offer the optimal solution for your energy requirements. In cooperation with our local partners we can deliver & support the installation and commissioning on-site.





## Solar & Wind Power Camping Tent



Jupiter's Self Powered Prefabricated  
Portable Houses Project



## Solar & Wind Power Electric Propulsion Systems

We know specialists who specialize in designing and engineering the complete solar system. They match the components like the different types of solar panels, controllers, inverters, management centres, and safety protection items. All the components have to be carefully matched to handle the loads exerted on the battery storage banks.





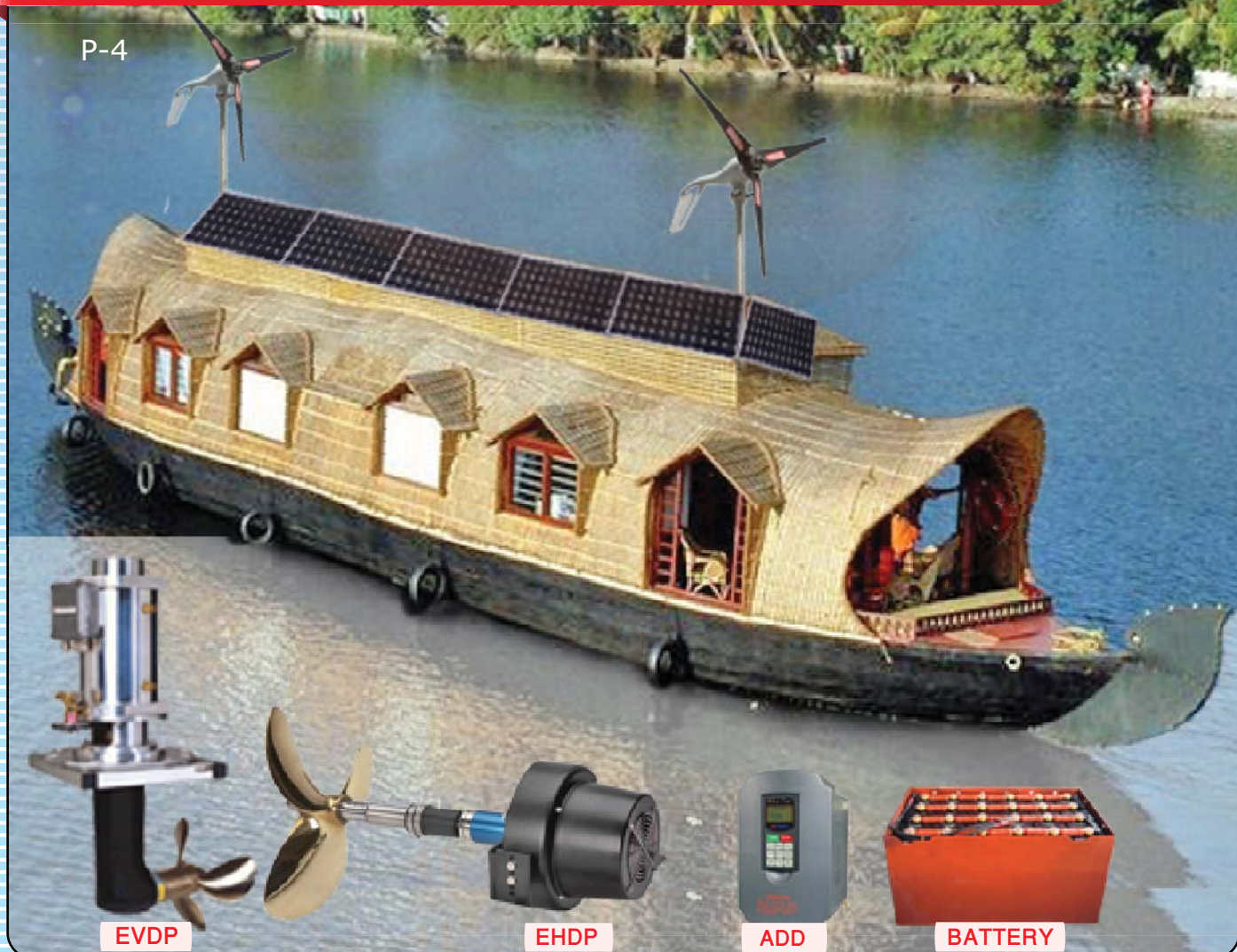
## Solar & Engine Power 2-in-1 Drive System

P-3



## Solar & Wind Electrical and Engine 2 in 1 Propulsion System

P-4





## Solar & Wind Power Floating Cold Storage



## Intelligent Solar & Wind Power Portable Cold Storage







## Custom Design Solar Panels Manufacture & Supply

Solar panels (arrays of photovoltaic cells) make use of renewable energy from the sun and are a clean and environmentally sound means of collecting solar energy.

### SUPERIOR SOLAR PANELS & SOLAR INVERTERS

We use highly efficient solar panels in all our grid connect solar systems. Long-lasting and damage proof, they're sure to outlast competing solar panels!



## Solar Panel Installations

We use quality materials to install your new system and we do it right the first time.

We take pride in our work and pay attention to the details that guarantees that your system will be up and running quickly, efficiently, and worry-free.



## Wind Turbine Refurbishing

JEMS has been professionally refurbishing solar & wind power equipments since 1988.

Our team of engineers follows strict processes to bring currently used equipment back to manufacturer recommended specifications.

## Wind Mill Preventive Maintenance

An ounce of care is worth a pound of cure! If you follow manufacturer recommendations for maintaining your equipment not only will you save money in the long run, you will have less down-time and fewer liability issues.

Let JEMS help by managing the preventive maintenance of key equipment.





### Solar Power Tablet PC Bag



### Solar Power Laptop Bag



We manufacture & supply mobile, tablet and laptop solar universal charger travel bag with in built additional battery and according to buyer, dealer, agent required specification. Including warranty, parts, after sales-technical service backup. Min 1000 Max 100,000 Qty.

### Solar & Wind Hat Charger



We design, manufacture & supply mobile and laptop charging hat according to buyer specification in bulk quantity. Min Qty 1000

### Portable Power Generator



We manufacture handy wind power mobile & laptop charger. During bicycle, Two wheeler, Bus & Train Travel. Min 1000 Max 100000 Qty

### 3-in-1 Drive Battery Vehicle



We manufacture & supply battery vehicles with simple intelligent automation electrical drive and battery recharging system, Which can charge the batteries in 3 ways. Solar-Wind and self alternator. According to bulk buyer, dealer, agent specification including warranty, spare parts, after sales-technical service support backup. Min 100 & Max 100,000 Qty.



## Domestic Wind Power Equipments

### Small wind turbine



Our company produce and sell the middle and small type wind turbines & generators

### Charge Controllers



Charge Controllers: It is highly efficient in transferring the wind generated out put.

### Inverters



Inverters are an essential component of most residential off-grid and back up power systems.

### Wind Mill Motor



Windmill Motor that is available in all specifications to meet the requirement of windmill application.

### Surge Protection Device



We offer Digital Anemometer, which provides accurate readings with digital readability.



Solar Surge Protective Device is a Type 1 device designed for indoor and outdoor applications.



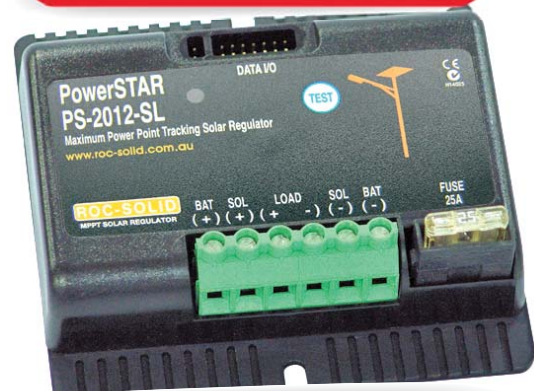
## Domestic Solar Power Equipments & Parts

### Solar Energy Unit.



We provide to our clients an array of domestic solar power plants that ideally fit our clients' varied needs

### Solar Controller Regulators



We offer wide range of solar charge controller is needed in virtually all solar power systems.

### Solar Intelligent System



An automated solar panel that actually follows the Sun for increased power.

### Solar Charger Controller



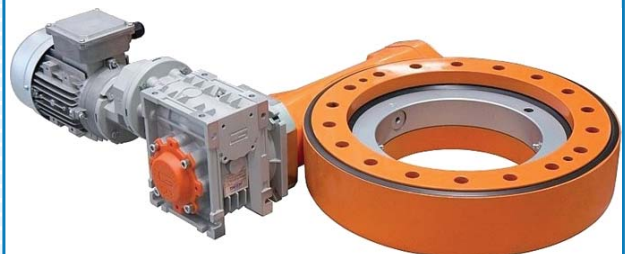
Solar charge controllers ranging from 5A to 60A. Complete protection from short circuits.

### Solar Inverter



A solar inverter or PV inverter is a critical component in a solar energy system.

### Sun tracker motor



Solar Track that harnesses the sunlight light for application in various requirements.





H.O: INDIA

**(JEMS) Jupiter Equipments Manufacturer & Supplier Pvt Ltd.**

Main Road, Pathur 613705, Tiruvarur-Dt, Tamilnadu, S. India

Tel: +91-4366-232333, Mob: +91-95000 60000

E-mails: [info@jems4u.com](mailto:info@jems4u.com) [india@jems4u.com](mailto:india@jems4u.com)

Skype: [jupiter-india-h.o](https://www.skype.com/jupiter-india-h.o) Web: [www.jems4u.com](http://www.jems4u.com)

### Main Branch



BAHRAIN

**JEMS Co.W.L.L**

Salmaabad, Kingdom of Bahrain

E-mail: [info@jems4u.com](mailto:info@jems4u.com)

Skype: [jupiter-bahrain-br](https://www.skype.com/jupiter-bahrain-br)



CHINA

**JEMS Trading Co Ltd.**

Shanghai, China

E-mail: [china@jems4u.com](mailto:china@jems4u.com)

Skype: [jupiter-china-br](https://www.skype.com/jupiter-china-br)



QATAR

Industrial Estate, Doha Qatar

E-Mail: [qatar@jems4u.com](mailto:qatar@jems4u.com)

Skype: [jupiter-qatar-br](https://www.skype.com/jupiter-qatar-br)



DUBAI UAE

Industrial Zone-1, Dubai UAE

E-Mail: [dubai@jems4u.com](mailto:dubai@jems4u.com)

Skype: [jupiter-dubai-br](https://www.skype.com/jupiter-dubai-br)



SAUDI ARABIA

Industrial Area, Dammam

Skype: [jupiter-saudi-br](https://www.skype.com/jupiter-saudi-br)



SINGAPORE

Jurong West Singapore

Skype: [jupiter-singapore-br](https://www.skype.com/jupiter-singapore-br)

We Solicit Agent, Dealers, Distributors, Marketing.  
Technical Service Support Enquiries & Information:

Contact for Middle East :

**R. Jehan** (Sales & Sr Manager)

Mob: 00973-39236574

Tel : 00973-17-874667

E-Mail: [info@jems4u.com](mailto:info@jems4u.com)

